

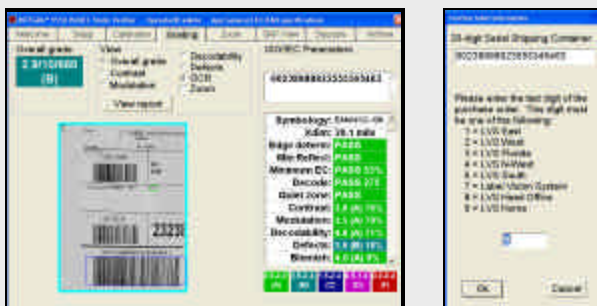
LVS 9550 / 9560 System

The LVS 9550 / 9560 system is the only closed loop, simple to use, system on the market that allows retail companies the ability to accurately control charge backs to vendors for poor quality SSCC codes. The system is comprised of 2 parts. The LVS 9550 (pictured) is a read-head attached to a PC and the LVS 9560 viewing station.



The LVS 9550 read-head is designed to be used at the DC reject or no read line. The LVS 9550 read-head is placed over the entire 6" x 4" SSCC label and a high resolution image is taken with a click of a button. The LVS 9550 analyzes the image, automatically locates the SSCC bar code, grades it in terms of ISO 15416 and performs an OCR (Optical Character Recognition) search for a specific department or location code.

If the bar code grade is unacceptable a new bar code label is automatically printed from the default printer and the user fixes the new label to the package ready to be sent back into the main distribution line.



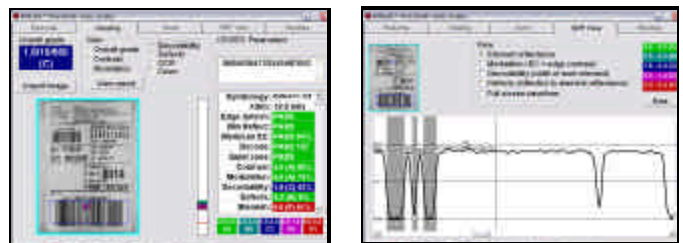
Large text, color value grading and user friendly interface are designed with the operator in mind. *Continued..*



A user-defined acceptance level is located in a configuration file. If the barcode quality is lower than the acceptance level:

- The high resolution image is saved to a user-defined location.
- The grading results are appended to a user-defined output file for later import in the customer's charge back system.
- Various other output files can optionally be updated.

LVS 9550 / 9560 System



The LVS 9560 is a viewing and analysis station that allows administrative staff to call up any image that was previously captured for analysis in the event of a dispute with a vendor. This analysis can be viewed by any vendor online by using desktop Internet based collaboration software (there are many available).

This is also a tool for educating vendors since the LVS 9560 has sophisticated analytical features that not only reports the ISO, GS1 & MIL130M structure analysis, it also reports grading information and graphically highlights the problem areas discovered in the bar code, this gives users easy to follow accurate detail on the various problems they may have in their print processes.

Warranty

RDG and Label Vision Systems, Inc. are pleased to offer a full (1) two year Return to Base warranty on all labor and materials for LVS products.

RDG and Label Vision Systems, Inc. will provide telephone support (5) five days a week 8 a.m. to 6 p.m. EST.

Hardware Features

PC Intel P4 2.8Ghz
512 MB RAM or more
Windows XP Pro

Printer Specifications

Datamax I-Class Print Station
Intermec
Monarch/Paxar
Printronix
Sato
Symbol
Zebra

Scan Resolution

All codes are scanned every 0.10 mm (.004")

Inputs / Outputs

USB 2.0 port
10/100 Ethernet

Camera

Monochrome Camera
2.1 mega-pixels



ISO/IEC/ANSI Verification

Edge Determination
Minimum Reflectance
Min Edge Contrast
Decode
Symbol Contrast
Modulation
Decodability
Defects (spots / voids)
Quiet Zone
Blemish
Validation of Human Readable

Standard Compliance

ISO 15415
ISO 15416
ISO 15426 (1 and 2)
General GS1 Application
Specification (GENSPEC)
21 CFR PART 11 COMPLIANT

