



# PPT VISION

- *High Speed Image Processing*
- *Visual Programming*
- *Broad Range of Inspection Algorithms*
- *Complete set of HMI tools*
- *Create Custom Turnkey Applications*
- *Rugged Industrial Hardware with Real Time Operating System*
- *Camera Link, Line Scan, Megapixel cameras*



The **IMPACT™ Machine Vision Micro-System** has all the capabilities of a high performance vision system within a compact and rugged module.

Designed for real-time industrial applications, IMPACT is a sealed device, with no moving parts, containing the essential components of machine vision into a single package. This includes a high-speed microprocessor, solid state memory, optically isolated I/O, serial interface, and real time operating system inside, plus digital cameras and Ethernet connectivity.

The IMPACT Machine Vision Micro-System contains a comprehensive visual programming toolkit called **Inspection Builder™**.

Inspection builder software contains image processing tools to deliver complete custom application programs within an easy to use interface.

Image processing programs are configured by selecting tools from a broad range of inspection algorithms, including high accuracy

measurement, defect detection, part location, package inspection, character reading, and data matrix code reading.

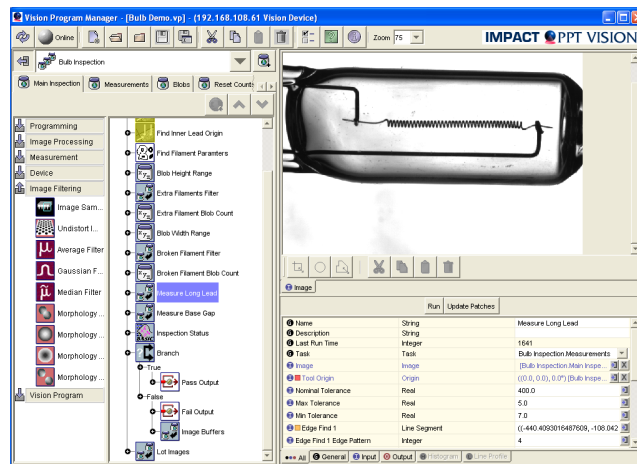
For fine-tuning, parameters can be manipulated within the inspection program, and for complex applications, advanced programming concepts such as multi-tasking, subroutine

management, and recipe control can be achieved.

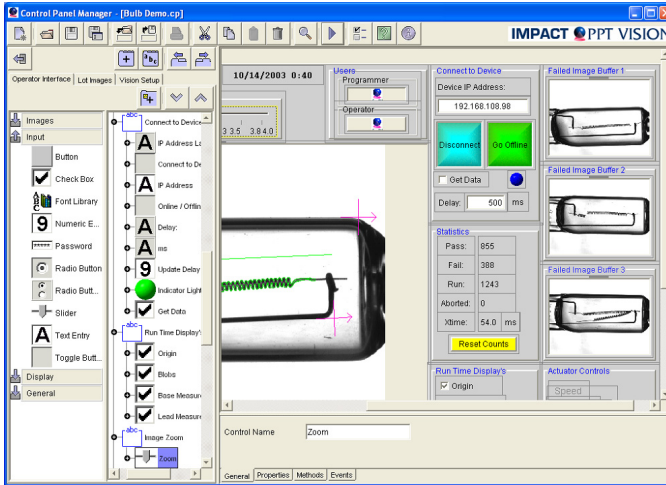
A complete HMI visual developers toolkit is included with **Inspection Builder** software (see back side of this document). Users can create complete turnkey solutions including a real-time operator interface, custom

designed for plant floor operators and engineers. This provides image display and defect alerts, plus real-time image processing results and fast part change-over.

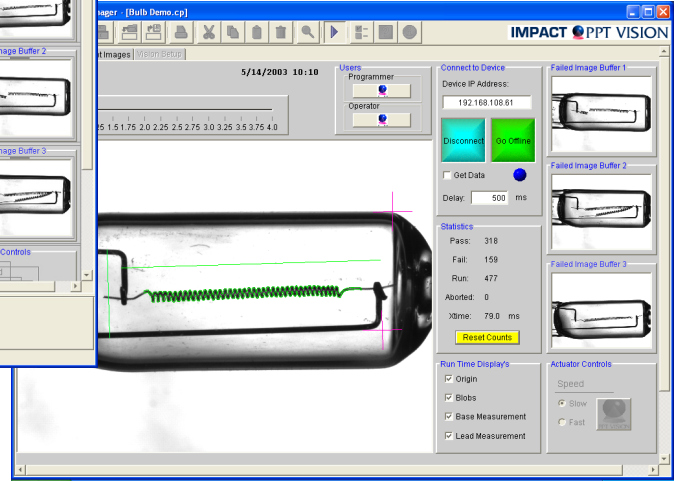
With the performance of a full-scale vision system contained within a compact industrial package, **IMPACT Machine Vision Micro-System** is a cost effective, scalable vision system for a broad range of inspection solutions.



# PPT VISION



Complete turnkey solutions can be created with *Inspection Builder™* Software. Visual Programming is used to achieve a custom HMI for unique plant floor requirements.



Custom HMI panels are developed for real-time operation, then deployed by TCP/IP Ethernet, to the plant floor. Plant floor operators use the real-time control panels for image display and defect alerts, plus real-time image processing results and fast part change-over.

## Specifications:

### Processor

1800 MIPS  
128 Meg RAM  
128 Meg Flash Memory

Dimensions: 8 L x 6.75 W x 2.75 H in  
(203 x 172 x 70 mm)

Weight: 3.5 lb (1589 g)

### Operating Parameters

Power Requirement: 24 VDC / 1.5 A  
Ambient Temperature: 0° to 50° C

### Communications

Ethernet – 10 / 100 Mbps Base-T  
Serial – Up to 115K Baud Rate  
LAN / WAN Connectivity

### I/O

7 Inputs (1 Camera Trigger, 2 Event, 4 Polled)  
8 Outputs (6 General Purpose, 2 Dedicated)  
3 Strobe Outputs

### Camera Options

(All Cameras Completely Software Controlled)

PPT5200: 640 x 480, 60 Fps, Digital  
PPT5600: 640 x 480, 40 Fps, Micro-head, Digital  
PPT7200: 1024 x 768, 16 Fps, Digital  
PPT8200: 1280 x 1024, 22 Fps, Digital  
PPT9200: 1600 x 1200, 12 Fps, Digital



Call for Models and Specifications

### Software

#### *Inspection Builder™*

Blob	Pattern Find
OCR / OCV	Data Matrix
Template	Contrast
Sub-pixel Gauge	BASIC
Filtering	Morphology
Serial / TCP/IP	Auto-Simulation
ActiveX Controls	
Automatic Lighting Adjustment	
Lens Distortion Calibration	
Embedded Image Calibration	

PPT VISION, INC.  
12988 Valley View Rd  
Minneapolis, MN 55344  
Phone 952-996-9500  
Fax 952-996-9501  
info@pptvision.com  
www.pptvision.com  
ISO 9001  
REGISTERED

© PPT VISION



PPT VISION