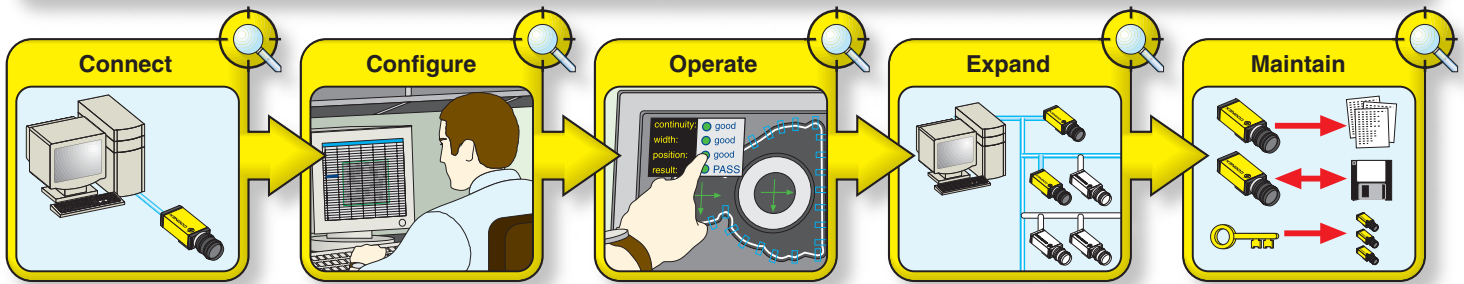


# IN-SIGHT EXPLORER

## AN INTEGRATED USER ENVIRONMENT FOR IN-SIGHT VISION SENSORS



In-Sight® vision sensors have played a key role in reducing the cost of ownership of machine vision installations, due in part to the simplicity they bring to development and integration. To further reduce this cost of ownership, efficient *administration* of vision sensors is also required. In-Sight Explorer enhances the power of Cognex In-Sight vision sensors by combining efficient vision application development with powerful tools with which to administer a vision sensor network.

In-Sight Explorer is designed for the entire line of network-enabled In-Sight vision sensors. Incorporating the familiar Microsoft Windows® interface, In-Sight Explorer greatly enhances the In-Sight spreadsheet development tool. Additionally, integrated utilities simplify system setup, monitoring, and management. This easy-to-use environment translates into lower cost of ownership and faster deployment of vision applications onto the factory floor.

In-Sight Explorer achieves this by simplifying the five steps of the vision development life cycle:

- **Connect** Step-by-step wizards facilitate the connection of a single vision sensor to a PC, or the connection of multiple vision sensors to a factory floor network. No networking knowledge is required.
- **Configure** In-Sight Explorer enhances the powerful In-Sight spreadsheet with standard Windows functionality such as shortcuts, a new tool palette, image zooming and panning, and integrated context-sensitive help.
- **Operate** Flexible and customizable user interfaces can be created and independently password-protected for multiple sensors. These interfaces can be simultaneously viewed within a *single* In-Sight Explorer application, greatly enhancing the ease of monitoring a typical production line where multiple vision sensors are employed.
- **Expand** File utilities that allow backup and duplication enable the rapid addition of vision sensors across new production lines linked by an Ethernet network.
- **Maintain** Management utilities provide administration tools for maintaining networked vision sensors. These utilities include report generation, file management, and firmware updating.

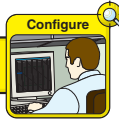
### ADVANTAGES

- Microsoft Windows look and feel provides a familiar user environment
- Wizards and intuitive operations enable simple setups
- Reporting feature facilitates management communications
- Simplified sensor management lowers total cost of ownership
- Environment is consistent across all In-Sight products
- Provides full compatibility with existing In-Sight jobs

## BRINGING SIMPLICITY AND EFFICIENCY TO IN-SIGHT USERS

Here are a few examples of how In-Sight Explorer simplifies the development, integration, and administration of vision applications, reducing cost of ownership.

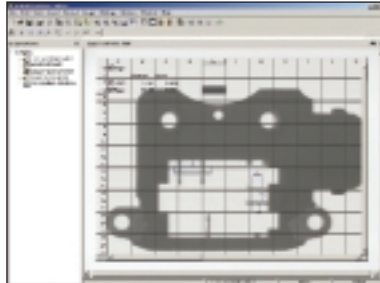
### Enhanced Development Environment



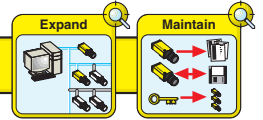
**Point and Click** graphical environment is designed for mouse and keyboard use as well as touch screen PCs.

**Vision Tool Palette** provides the ability to drag and drop vision tools from the palette directly to the spreadsheet.

**Task Bar** allows the user to quickly access the most common features without navigating through menus or function keys.



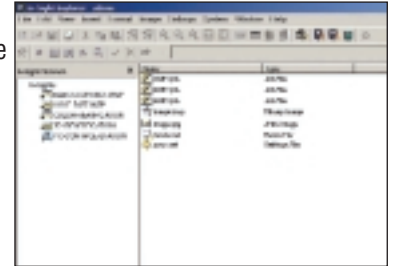
### File Manager



**Backup and Restore** allows the user to backup and restore systems to and from a PC.

**Clone System** facilitates the duplication of an entire system's settings and job files onto multiple systems.

**Multi System Update** enables the updating of firmware across a network of In-Sight systems.



### View Manager



**View Multiple Systems** allows the simultaneous viewing of one, two, four or more systems in a single screen, with tool graphics.

**View Entire In-Sight Network** allows viewing of all In-Sight systems on the network, and includes an icon that indicates user access to a given system.

**Pan, Zoom, Scale** allows the user to pan, scale, or zoom into an In-Sight display.

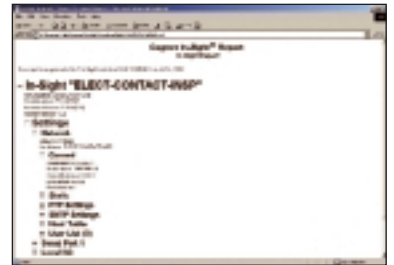


### Report Manager

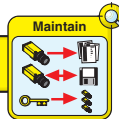


**Job Reports** produces current job information, including tools utilized and all I/O configurations in .xml format.

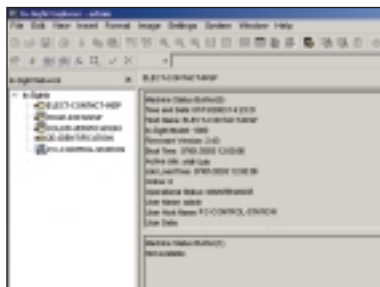
**Network Reports** provides the system's network settings and IP configurations in .xml format.



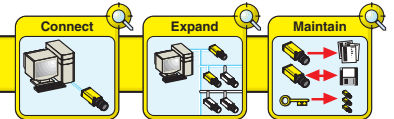
### Machine Status Manager



Provides a means to view machine status and user-selected information (including uptime, active job, online and offline information) for any In-Sight system.



### Network Manager



Provides a step-by-step wizard interface to connect an In-Sight unit directly to a PC, add more units to the network, and set up or modify In-Sight vision sensors already connected to the network.

