

NetSight II™

PRODUCT DATASHEET

Machine Vision System

Overview

NetSight II is a robust machine vision solution designed for quick and easy implementation on the factory floor. It has been designed from the ground up to overcome problems that end-users face when trying to implement PC/Frame-grabber solutions or smart cameras into a real-world production environment. With NetSight II, you'll spend less time integrating components and more time developing your applications. Armed with a high performance processor, multiple camera inputs, flexible communication and a comprehensive user interface, NetSight II is equipped and ready to tackle any inspection task.

Smart cameras quickly lose their potential cost advantage when multiple views of an object are required. Moreover if the cameras need to talk to each other, the complexity and reliability of these systems becomes an issue. By comparison, the cost-effective NetSight II system allows you to view and process up to four camera images simultaneously before rendering a single pass/fail decision. Furthermore, you select the camera of choice for your application. Most standard and Megapixel analog cameras are supported. Included with the product is a camera configurator tool that makes interfacing to non-standard cameras easy.

The user interface to NetSight II is Sherlock, a powerful automated inspection tool that is deployed in thousands of installations worldwide. Sherlock is easy-to-use, yet fully configurable and allows you to quickly prototype, benchmark and deploy applications. For complex tasks, Sherlock provides the ultimate in flexibility, including inline scripting, support for custom algorithms and the ability to customize the user interface. For integrators or machine builders wishing to port their own software, NetSight II is available with a library of C++ functions to access the individual hardware components.



Key Features

- Rugged system for online automated inspection
- Processes multiple image views simultaneously
- Powerful embedded processor ensures fast inspection times
- Easily integrates into factory environments, OPC compatible
- Fully configurable vision software, combines ease-of-use and flexibility with proven inspection tools
- Broad range of supported cameras
- Ideal solution for end-users, integrators and machine builders

Specifications

Memory

- 256 MB program memory
- 20 GB storage memory

Acquisition

- Up to 3 monochrome or 1 RGB analog camera
- Each camera can be supplied with +12V @ 500mA
- 15-pin DSUB connectors for easy wiring
- Support for standard (640x480) and Megapixel (1024x1024 or greater) formats
- 1 Firewire camera using IEEE 1394 port
- Simultaneous acquisition from up to 3 synchronous monochrome cameras and 1 Firewire camera

Digital Inputs

- Part-in-place trigger
- 7 general-purpose for job code, control switching, etc.
- TTL to 30V compatible

Digital Outputs

- Light Strobe
- 7 general-purpose outputs for inspection status, control or PLC interfacing
- NPN sinking outputs

NetWork

- 10/100 BaseT Ethernet
- IEEE 802.3 compatible
- Supports DHCP and static IP addressing

Communication

- 2 USB 1.1 compliant ports
- 1 IEEE 1394 Firewire (400Mbps)
- 1 RS-232 serial port
- 1 parallel port
- Audio (alarm)
- Keyboard, mouse and VGA display
- 7 status LEDs

Display

- SVGA
- 32 MB shared VGA memory

User Interface

- Sherlock vision environment
- Easy-to-use graphical interface
- Proven set of tools for alignment, gauging, identification, verification and general inspection applications
- Supports custom plug-ins and operator interfaces
- Integrates easily with other factory components (OPC compliant)

Power

- 24 VDC +/- 10%
- 2.5A typical, 3A Maximum

Environment

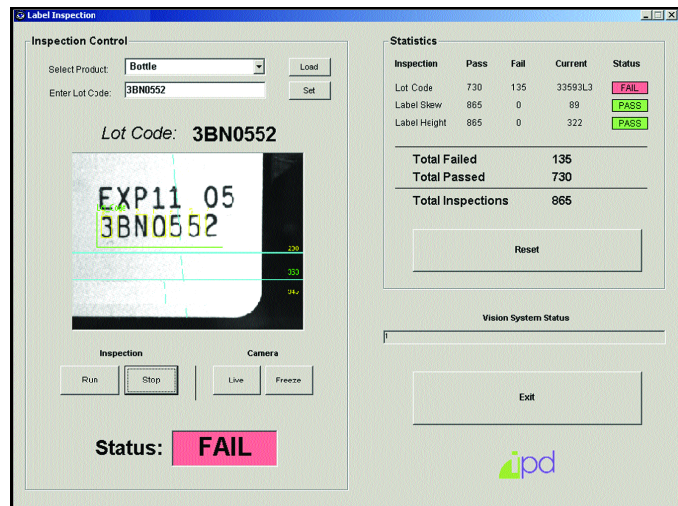
- Operating Temperature: 0°C to +45°C
- Storage Temperature: -10°C to +85°C
- Relative Humidity: 5% up to 90% (non-condensing)

Markings

- FCC class B - pending
- CE - pending

Mechanical

- Cast Aluminum body
- 7 threaded holes on underside for mounting
- Dimensions: 7.6 x 20 x 21.5 cm
- Weight: 5.61 Lbs.



Example custom operator interface



To learn more about NetSight II, see our website at www.goipd.com/products/netsightII

ipd Headquarters • 900 Middlesex Turnpike • Building 8 • Billerica, MA • 01821

Email: info@goipd.com • Tel: +1 978.670.2002 • Fax: +1 978.670.2010

PART NO. NS2-M-100B REVISION 11/03

Copyright © 2003, ipd, a division of Coreco Imaging, Inc. All rights reserved.